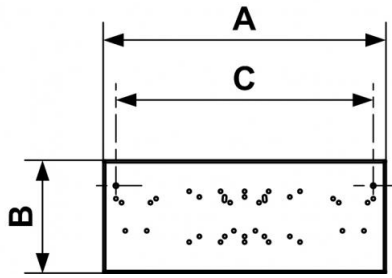


# Non-equipped mounting plate for prevoS1 wall fittings, ALTO air treatment units and accessories



<p><b>Description</b></p> <p>Mounting deck for fastening:</p> <ul style="list-style-type: none"> <li>- prevoS1 wall brackets -</li> <li>ALTO air treatment units -</li> <li>Accessories</li> </ul>	<p><b>Weight (max. lb)</b></p> <p>220</p>	<p><b>Construction</b></p> <p>Galvanized steel, Polyester paint</p>	<p><b>Applications</b></p> <p>Fastening system for IPN/HEA beams</p>
<p><b>Highlight</b></p> <p>Workstation ergonomics</p>			

Description		
Reference	Description	Weight (max. lb)
<p><b>PLA 1000N</b></p>	<p>Mounting deck for fastening: - prevoS1 wall brackets - ALTO air treatment units - Accessories</p>	<p>220</p>



### Dimensions

Reference	A inch	B inch	C inch
<b>PLA 1000N</b>	19.685	7.874	17.913