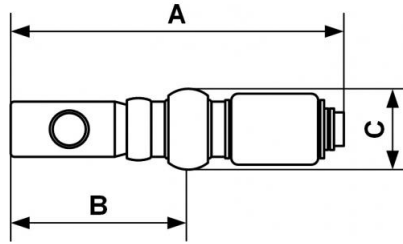


Hose stem swivel coupler



<p><u>For hose ID</u> 1/4" Hose Barb</p>	<p><u>Technology</u> Push button</p>	<p><u>Operating pressure</u> 0 to 174 psi</p>	<p><u>Flow rate at 100 psi</u> 78 cfm ($\Delta P = 10$ psi)</p>
<p><u>ID Passage</u> 3/8" body size</p>	<p><u>Temperature</u> +5°F to +158°F</p>	<p><u>Highlight</u> Non scratch</p>	

Description	
Reference	For hose ID
IRC 081806FA	1/4" Hose Barb
IRC 081808FA	8
IRC 081810FA	3/8" Hose Barb
IRC 081813FA	1/2" Hose Barb



Dimensions

Reference	A inch	B inch	C inch
IRC 081806FA	0.60695538057743	0.22309711286089	0.11811023622047
IRC 081808FA	0.60761154855643	0.2247375328084	0.13123359580052
IRC 081810FA	0.60761154855643	0.2247375328084	0.13123359580052
IRC 081813FA	0.60761154855643	0.2247375328084	0.13123359580052