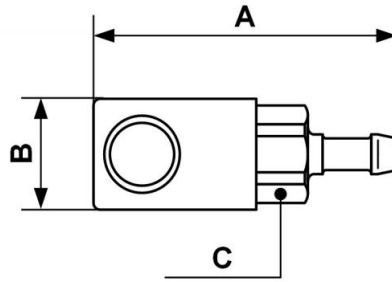


## Hose stem coupler



<p><b><u>For hose ID</u></b> 1/4" Hose Barb</p>	<p><b><u>Technology</u></b> Push button</p>	<p><b><u>Operating pressure</u></b> 0 to 174 psi</p>	<p><b><u>Flow rate at 100 psi</u></b> 32 cfm (<math>\Delta P = 10</math> psi)</p>
<p><b><u>Temperature</u></b> +5°F to +158°F</p>	<p><b><u>Construction</u></b> Composite body</p>	<p><b><u>Highlight</u></b> Non scratch</p>	

Description	
Reference	For hose ID
<b>IRC 061806</b>	1/4" Hose Barb
<b>IRC 061810</b>	3/8" Hose Barb
<b>IRC 061813</b>	1/2" Hose Barb



### Dimensions

Reference	A inch	B inch	C inch
<b>IRC 061806</b>	0.25590551181102	0.091863517060367	0.075459317585302
<b>IRC 061810</b>	0.25590551181102	0.091863517060367	0.075459317585302
<b>IRC 061813</b>	0.25590551181102	0.091863517060367	0.075459317585302