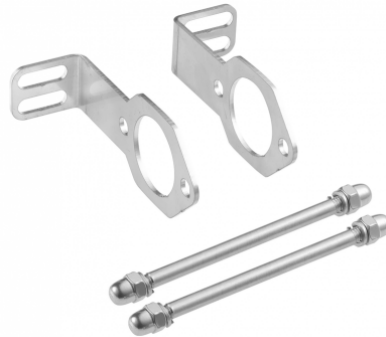


Wall bracket for SPC separator



Compatible with

SPC 155 - SPC 235

Max operating pressure

232 psi

Temperature

+34°F to +149°F

Construction

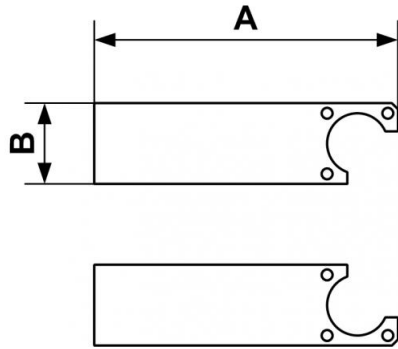
Anodized Aluminium

Equipped with

Automatic float drain

Description

| Reference | Compatible with |
|---------------|-------------------|
| SPC Q1 | SPC 155 - SPC 235 |
| SPC Q2 | SPC 1280 |
| SPC Q3 | SPC 365 - SPC 770 |



| Dimensions | | |
|---------------|------------------|------------------|
| Reference | A inch | B inch |
| SPC Q1 | 0.49868766404199 | 0.13123359580052 |
| SPC Q2 | 0.62007874015748 | 0.20997375328084 |
| SPC Q3 | | |