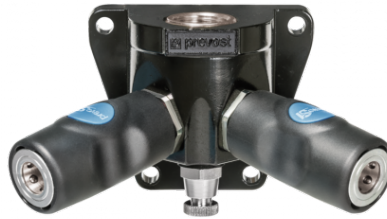


Female thread double wall manifold - 2 couplers and drain - 1/4" Industrial Profile



Inlet NPT female thread

1/2" FNPT

Outlet 2 couplings

ISI 06

Technology

"One push" safety system
(avoids hose whip)

Operating pressure

29 to 174 psi

Flow rate at 100 psi

34 cfm ($\Delta P = 10$ psi)

ID Passage

1/4" body size

Temperature

+5°F to +158°F

Construction

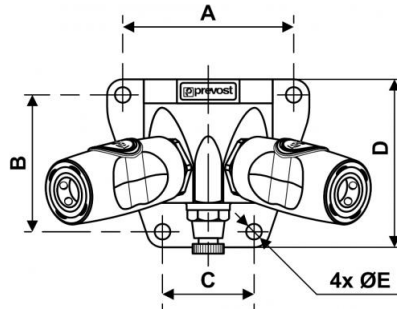
Composite body

Highlight

Anti-static Non scratch

Description

Reference	Inlet NPT female thread	Outlet 2 couplings
ISI 068203WK	1/2" FNPT	ISI 06
ISI 068204WK	3/4" FNPT	ISI 06



Dimensions

Reference	A inch	B inch	C inch	D inch	E inch
ISI 068203WK	2.795	2.244	1.496	2.756	0.256
ISI 068204WK	2.795	2.244	1.496	2.756	0.256