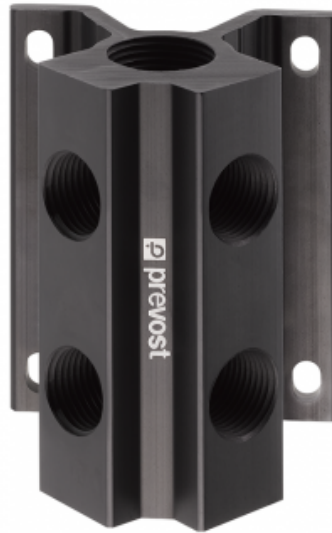


Manifold



Inlet NPT female thread

3/4" FNPT

Number of outlets

4

Outlet NPT female thread

1/2" FNPT

Operating pressure

29 to 174 psi

Temperature

- 60°F to +200°F

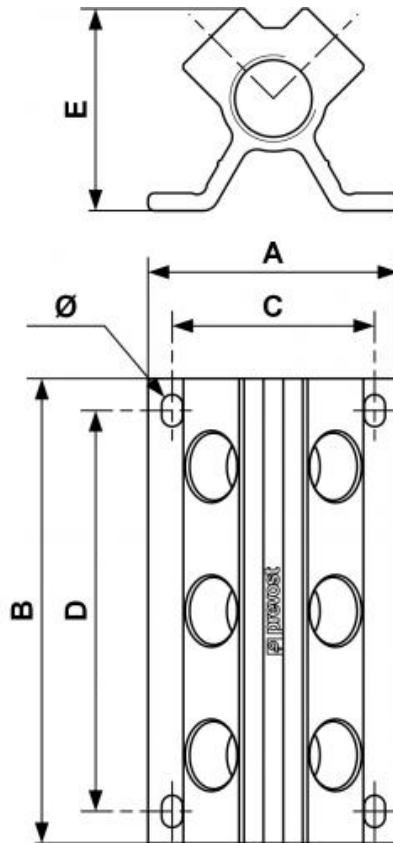
Construction

Aluminium

Description

| Reference | Inlet NPT female thread | Number of outlets | Outlet NPT female thread |
|-----------------|-------------------------|-------------------|--------------------------|
| MF 204S4 | 3/4" FNPT | 4 | 1/2" FNPT |
| MF 204S6 | 3/4" FNPT | 6 | 1/2" FNPT |

| Reference | Inlet NPT female thread | Number of outlets | Outlet NPT female thread |
|------------------|-------------------------|-------------------|--------------------------|
| MF 204S8 | 3/4" FNPT | 8 | 1/2" FNPT |
| MF 204S10 | 3/4" FNPT | 10 | 1/2" FNPT |



Dimensions

| Reference | A inch | B inch | C inch | D inch | E inch |
|------------------|--------|--------|--------|--------|--------|
| MF 204S4 | 3.071 | 3.937 | 2.48 | 3.15 | 2.48 |
| MF 204S6 | 2.913 | 5.709 | 2.48 | 4.921 | 2.48 |
| MF 204S8 | 3.071 | 7.48 | 2.48 | 6.693 | 2.48 |
| MF 204S10 | 3.071 | 9.252 | 2.48 | 8.465 | 2.48 |