

Parallel male thread exhaust silencer - PPS



Male thread

M5 x 0.8

Max operating pressure

174 psi

Construction

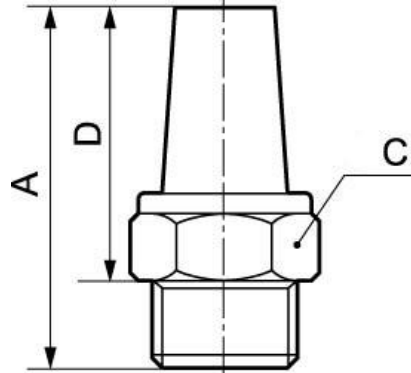
Sintered bronze filter element excepted partnr.PPP

Highlight

Lowering of sound level

Description

Reference	Male thread
PPS M5	M5 x 0.8
PPS 38	G 3/8
PPS 34	G 3/4
PPS 18	G 1/8
PPS 14	G 1/4
PPS 12	G 1/2



Dimensions

Reference	A inch	C inch	D inch
PPS M5	21	8	16.5
PPS 38	42	19	34
PPS 34	50	30	40
PPS 18	28	13	22
PPS 14	33.5	16	26
PPS 12	53	24	43