

Female coupler - Stainless Steel



BSPF female thread

1/4" FBSP

Technology

Push button

Operating pressure

0 to 174 psi

Flow rate at 100 psi

32 cfm ($\Delta P = 10$ psi)

ID Passage

1/4" body size

Temperature

+5°F to +158°F

Construction

Composite body Stainless steel valve

Applications

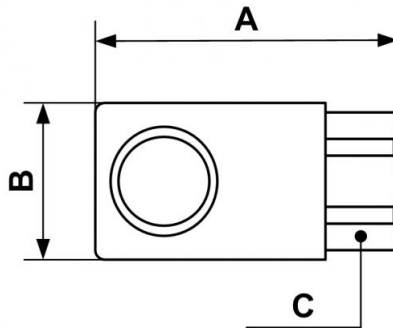
Corrosive atmospheres

Highlight

Non scratch

Description

Reference	BSPF female thread
PROXI 061101	1/4" FBSP
PROXI 061102	3/8" FBSP
PROXI 061103	1/2" FBSP



Dimensions

Reference	A inch	B inch	C inch
PROXI 061101	0.17716535433071	0.091863517060367	0.075459317585302
PROXI 061102	0.20341207349081	0.091863517060367	0.075459317585302
PROXI 061103	0.21325459317585	0.091863517060367	0.082020997375328