

Hose stem plug - Stainless Steel



For hose ID

1/4" Hose Barb

Technology

Push button

Operating pressure

0 to 174 psi

Flow rate at 100 psi

32 cfm ($\Delta P = 10$ psi)

ID Passage

1/4" body size

Temperature

+5°F to +158°F

Construction

Composite body Stainless steel valve

Applications

Corrosive atmospheres

Highlight

Non scratch

Description

Reference

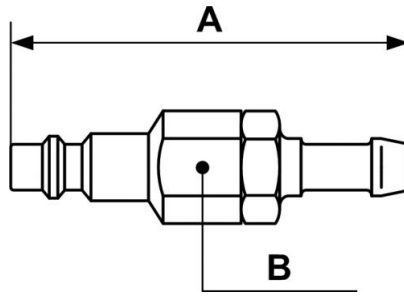
For hose ID

PROXI 066806

1/4" Hose Barb

PROXI 066810

3/8" Hose Barb



Dimensions

Reference	A inch	B inch
PROXI 066806	0.22637795275591	0.055774278215223
PROXI 066810	0.22637795275591	0.055774278215223