

Tapered male / Parallel female elbow - A10



BSPT male thread

R 3/8

BSPP female thread

G 3/8

Operating pressure

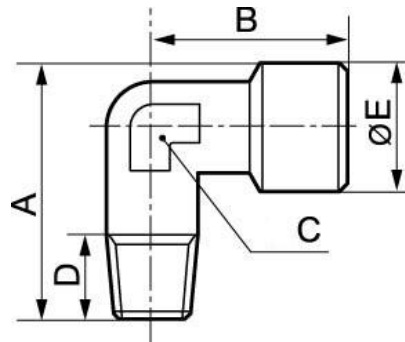
0 to 15 bar

Construction

Brass and nickel-plated
brass

Description

Reference	BSPT male thread	BSPP female thread	NPT male thread	NPT female thread
A10 3838	R 3/8	G 3/8	1/8" MNPT	1/8" FNPT
A10 200250			1/4" MNPT	1/4" FNPT
A10 201251			3/8" MNPT	3/8" FNPT
A10 202252			1/2" MNPT	1/2" FNPT
A10 203253				



Dimensions

Reference	A inch	B inch	C inch	D inch	E inch
A10 3838	36.5	30	15	12	20.5
A10 200250	0.085629921259843	0.072178477690289	0.035761154855643		
A10 201251	0.11056430446194	0.093503937007874	0.041994750656168		
A10 202252	0.1246719160105	0.094816272965879	0.042322834645669		
A10 203253	0.14665354330709	0.11679790026247	0.06496062992126		