

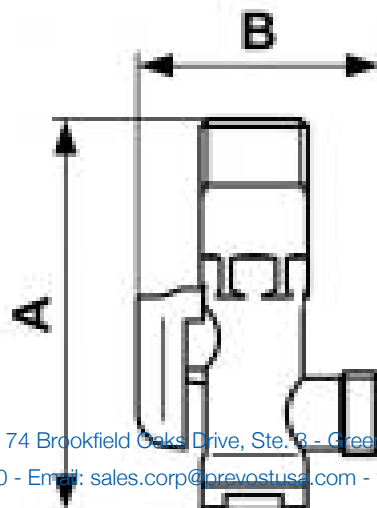
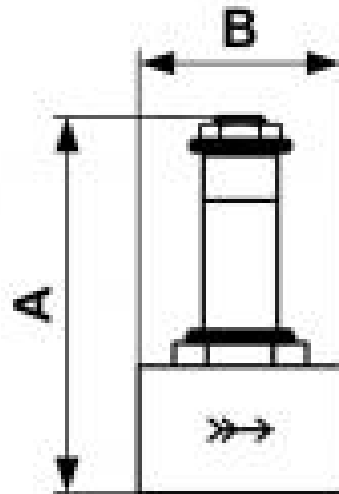
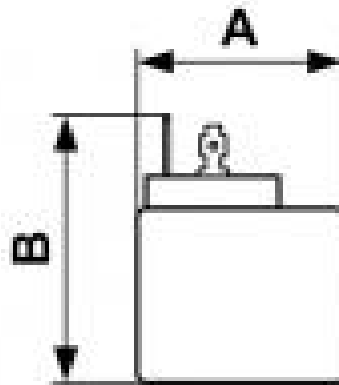
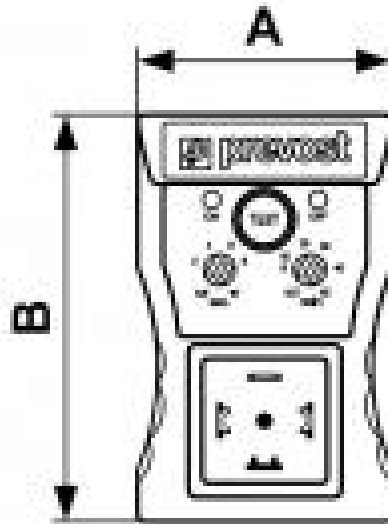
Parts for Programmable Electronic Drain



<u>Description</u> (2) Coil	<u>Fastening NPT male thread</u> 110V-50/60 Hz	<u>Operating pressure</u> 0 to 232 psi	<u>ID Passage</u> 5/32"
<u>Temperature</u> +35°F to +131°F	<u>Drain cycle</u> 0,5 - 45 min	<u>Drain opening</u> 0,5 - 10 sec	<u>Supply voltage</u> 24 - 220 V 50/60 HZ

Description		
Reference	Description	Fastening NPT male thread
BOB 110VA	(2) Coil	110V-50/60 Hz
ELV 201	(3) Solenoid	1/4" FNPT
ELV 202	(3) Solenoid	3/8" FNPT
ELV 203	(3) Solenoid	1/2" FNPT

Reference	Description	Fastening NPT male thread
COL 253252	(4) Impurity collector	1/2" MNPT x 3/8" MNPT
TEMP CONNECT	(5) Power connector	



Dimensions		
Reference	A inch	B inch
BOB 110VA	0.13451443569554	0.1738845144357
ELV 201	3.15	1.575
ELV 202	3.15	1.575
ELV 203	3.15	1.811
COL 253252	0.32152230971129	0.19685039370079
TEMP CONNECT	1.772	0.984