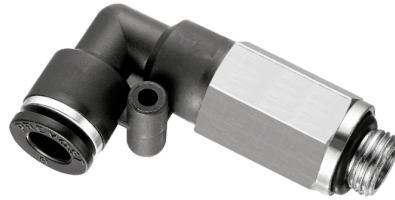


Extended male elbow - Metric tube to M5 - RPC LG



Metric male threading

M5

For tube OD (mm)

4

Operating pressure

0 to 145 psi

Temperature

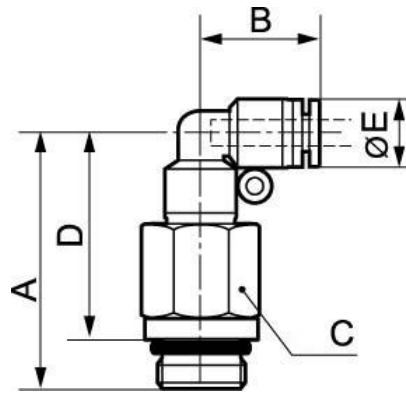
+32°F to +140°F

Construction

Polymer and nickel-plated
brass

Description

| Reference | Metric male threading | For tube OD (mm) |
|-------------------|-----------------------|------------------|
| RPC LG04M5 | M5 | 4 |
| RPC LG06M5 | M5 | 6 |



Dimensions

| Reference | A inch | B inch | C inch | D inch | E inch |
|-------------------|------------------|-------------------|-------------------|------------------|-------------------|
| RPC LG04M5 | 0.11646981627297 | 0.05741469816273 | 0.032808398950131 | 0.10334645669291 | 0.032808398950131 |
| RPC LG06M5 | 0.13287401574803 | 0.067257217847769 | 0.039370078740158 | 0.11975065616798 | 0.041994750656168 |