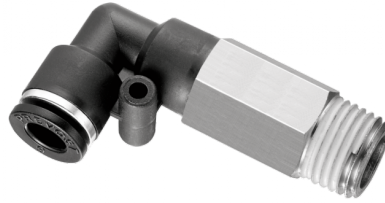


Extended male elbow - Metric tube to male BSPT - RPC LR



BSPT male thread

1/8" MBSP

For tube OD (mm)

4

Operating pressure

0 to 145 psi

Temperature

+32°F to +140°F

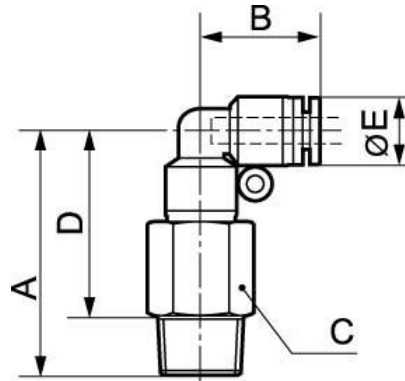
Construction

Polymer and nickel-plated
brass

Description

Reference	BSPT male thread	For tube OD (mm)
RPC LR0400	1/8" MBSP	4
RPC LR0401	1/4" MBSP	4
RPC LR0600	1/8" MBSP	6
RPC LR0601	1/4" MBSP	6
RPC LR0602	3/8" MBSP	6
RPC LR0603	1/2" MBSP	6
RPC LR0800	1/8" MBSP	8
RPC LR0801	1/4" MBSP	8

Reference	BSPT male thread	For tube OD (mm)
RPC LR0802	3/8" MBSP	8
RPC LR0803	1/2" MBSP	8
RPC LR1000	1/8" MBSP	10
RPC LR1001	1/4" MBSP	10
RPC LR1002	3/8" MBSP	10
RPC LR1003	1/2" MBSP	10
RPC LR1201	1/4" MBSP	12
RPC LR1202	3/8" MBSP	12
RPC LR1203	1/2" MBSP	12
RPC LR1402	3/8" MBSP	14
RPC LR1403	1/2" MBSP	14
RPC LR1602	3/8" MBSP	16
RPC LR1603	1/2" MBSP	16



Dimensions

Reference	A inch	B inch	C inch	D inch	E inch
RPC LR0400	0.11646981627297	0.05741469816273	0.032808398950131	0.091863517060367	0.032808398950131
RPC LR0401	0.12139107611549	0.05741469816273	0.045931758530184	0.091863517060367	0.032808398950131
RPC LR0600	0.13287401574803	0.067257217847769	0.039370078740158	0.10826771653543	0.041994750656168
RPC LR0601	0.14271653543307	0.067257217847769	0.045931758530184	0.11318897637795	0.041994750656168
RPC LR0602	0.1509186351706	0.067257217847769	0.055774278215223	0.11482939632546	0.041994750656168
RPC LR0603	0.15912073490814	0.067257217847769	0.068897637795276	0.11646981627297	0.041994750656168
RPC LR0800	0.14435695538058	0.073818897637795	0.045931758530184	0.11975065616798	0.045275590551181
RPC LR0801	0.1492782152231	0.073818897637795	0.045931758530184	0.11975065616798	0.045275590551181
RPC LR0802	0.15748031496063	0.073818897637795	0.055774278215223	0.12139107611549	0.045275590551181
RPC LR0803	0.16568241469816	0.073818897637795	0.068897637795276	0.12303149606299	0.045275590551181
RPC LR1000	0.16797900262467	0.086286089238845	0.055774278215223	0.14337270341207	0.05511811023622
RPC LR1001	0.17290026246719	0.086286089238845	0.055774278215223	0.14337270341207	0.05511811023622
RPC LR1002	0.17946194225722	0.086286089238845	0.055774278215223	0.14337270341207	0.05511811023622
RPC LR1003	0.18766404199475	0.086286089238845	0.068897637795276	0.14501312335958	0.05511811023622
RPC LR1201	0.18208661417323	0.091207349081365	0.062335958005249	0.15255905511811	0.06496062992126

Reference	A inch	B inch	C inch	D inch	E inch
RPC LR1202	0.19028871391076	0.091207349081365	0.062335958005249	0.15419947506562	0.06496062992126
RPC LR1203	0.19685039370079	0.091207349081365	0.068897637795276	0.15419947506562	0.06496062992126
RPC LR1402	0.19849081364829	0.097769028871391	0.072178477690289	0.16240157480315	0.074475065616798
RPC LR1403	0.20505249343832	0.097769028871391	0.072178477690289	0.16240157480315	0.074475065616798
RPC LR1602	0.20341207349081	0.1010498687664	0.078740157480315	0.16732283464567	0.078083989501312
RPC LR1603	0.20997375328084	0.1010498687664	0.078740157480315	0.16732283464567	0.078083989501312