

## Male connector - Metric tube to male M5 - RPD MG



**Metric male threading**

M5

**For tube OD (mm)**

4

**Operating pressure**

0 to 145 psi

**Temperature**

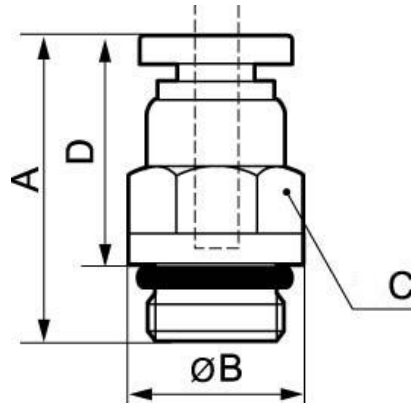
+32°F to +140°F

**Construction**

Polymer and nickel-plated  
brass

### Description

Reference	Metric male threading	For tube OD (mm)
<b>RPD MG04M5</b>	M5	4
<b>RPD MG06M5</b>	M5	6



### Dimensions

Reference	A inch	B inch	C inch	D inch
<b>RPD MG04M5</b>	0.070538057742782	0.039370078740158	0.032808398950131	0.05741469816273
<b>RPD MG06M5</b>	0.078740157480315	0.045931758530184	0.039370078740158	0.065616797900262