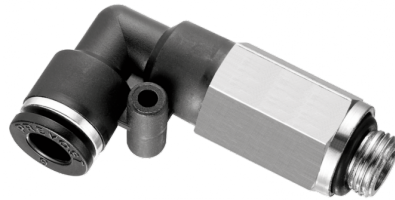


# Extended male elbow - Fractional inch tube to 10-32 UNF - RPC

## LG



**UNF thread**

10-32 UNF

**For tube OD (in)**

1/8

**Operating pressure**

0 to 145 psi

**Temperature**

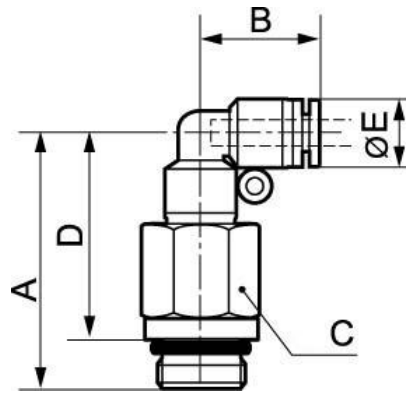
+32°F to +140°F

**Construction**

Polymer and nickel-plated  
brass

### Description

Reference	UNF thread	For tube OD (in)
<b>RPC LG1826</b>	10-32 UNF	1/8
<b>RPC LG5326</b>	10-32 UNF	5/32



### Dimensions

Reference	A inch	B inch	C inch	D inch	E inch
<b>RPC LG1826</b>	0.11646981627297	0.013123359580053	139.6062992126	0.05741469816273	0.032808398950131
<b>RPC LG5326</b>	0.11646981627297	0.013123359580053	139.6062992126	0.05741469816273	0.032808398950131