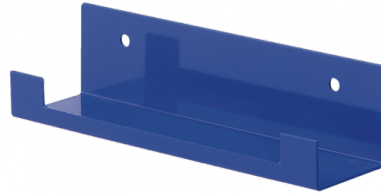


## Wall bracket for gantry



### Description

Wall bracket

### Temperature

+41°F to +122°F

### Construction

Body : Aluminium  
Polycarbonate bowl with  
metallic protection

### Highlight

Easy to transport

### Equipped with

Coupler and adapter

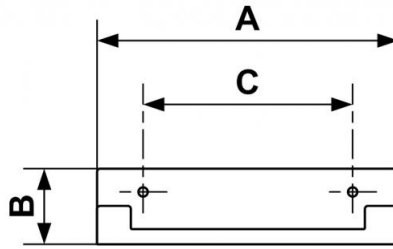
## Description

Reference

**PT K**

Description

Wall bracket



Dimensions			
Reference	A inch	B inch	C inch
<b>PT K</b>	10.079	2.48	7.165